



ANTONINI
NAVI

ANTONINI
NAVI

ISS



XPD-120

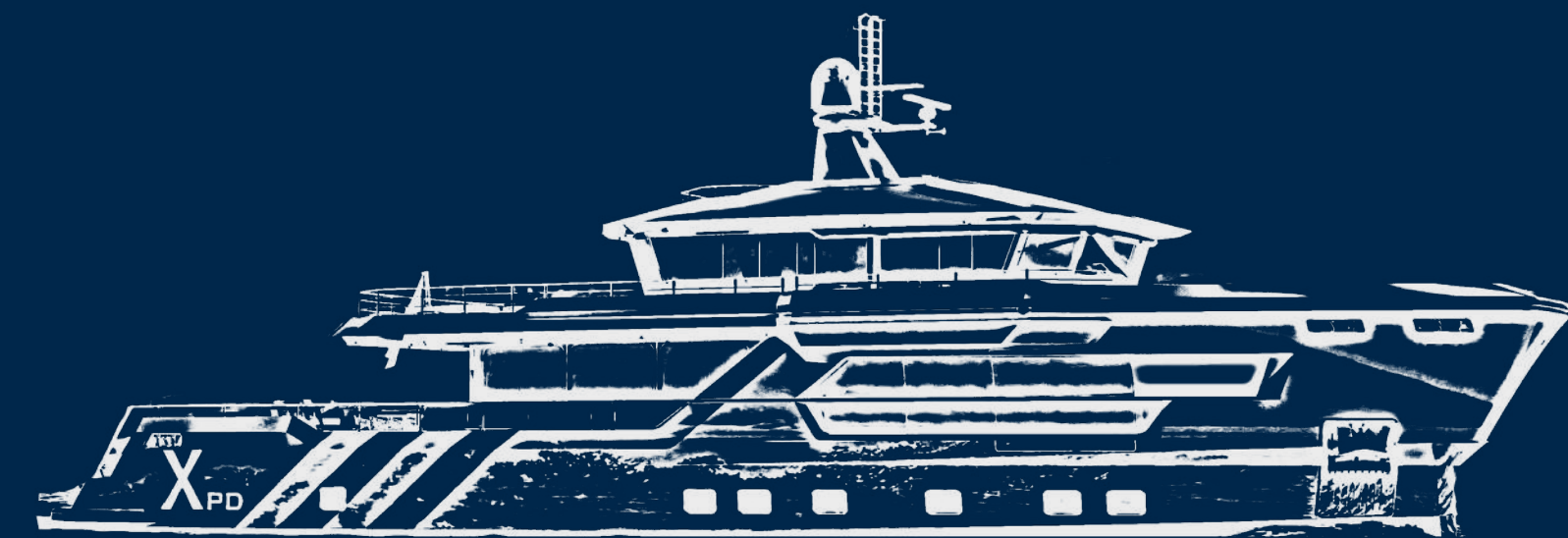
XPD-120

CONCEPT



XDP 120 offers a VIP cabin and an extra crew cabin, for a total of 10 guests and 5 crew members.

In addition, space has been given to new environments that can be used by guests, such as the exclusive lounge with a 180° view on the upper deck in direct communication with the pool deck overlooking the stern.



XPD SERIES

ICE CLASS



The XPD series is a modern reinterpretation of the Explorer Yachts, designed with simplicity and elegance with a primary objective: traveling. The philosophy that links the models in the range is experiencing the sea through a 360° slow-cruising experience.

In addition to the version with traditional engine, a low ecological impact alternative is offered thanks to a series hybrid propulsion system, for a cruise in full respect of nature that promotes environmental sustainability.

XPD-88 & XPD-120

INT/EXT DESIGN | ENGINEERING

STUDIO SCULLI

Mauro Sculli is a naval architect who started his career in the 90s.

He is knowledgeable, innovative and non-conformist designer; these characteristics convinced his friend Aldo Manna and the Antonini brothers to undertake this new and fascinating adventure together with him and his collaborator Matteo Covini.

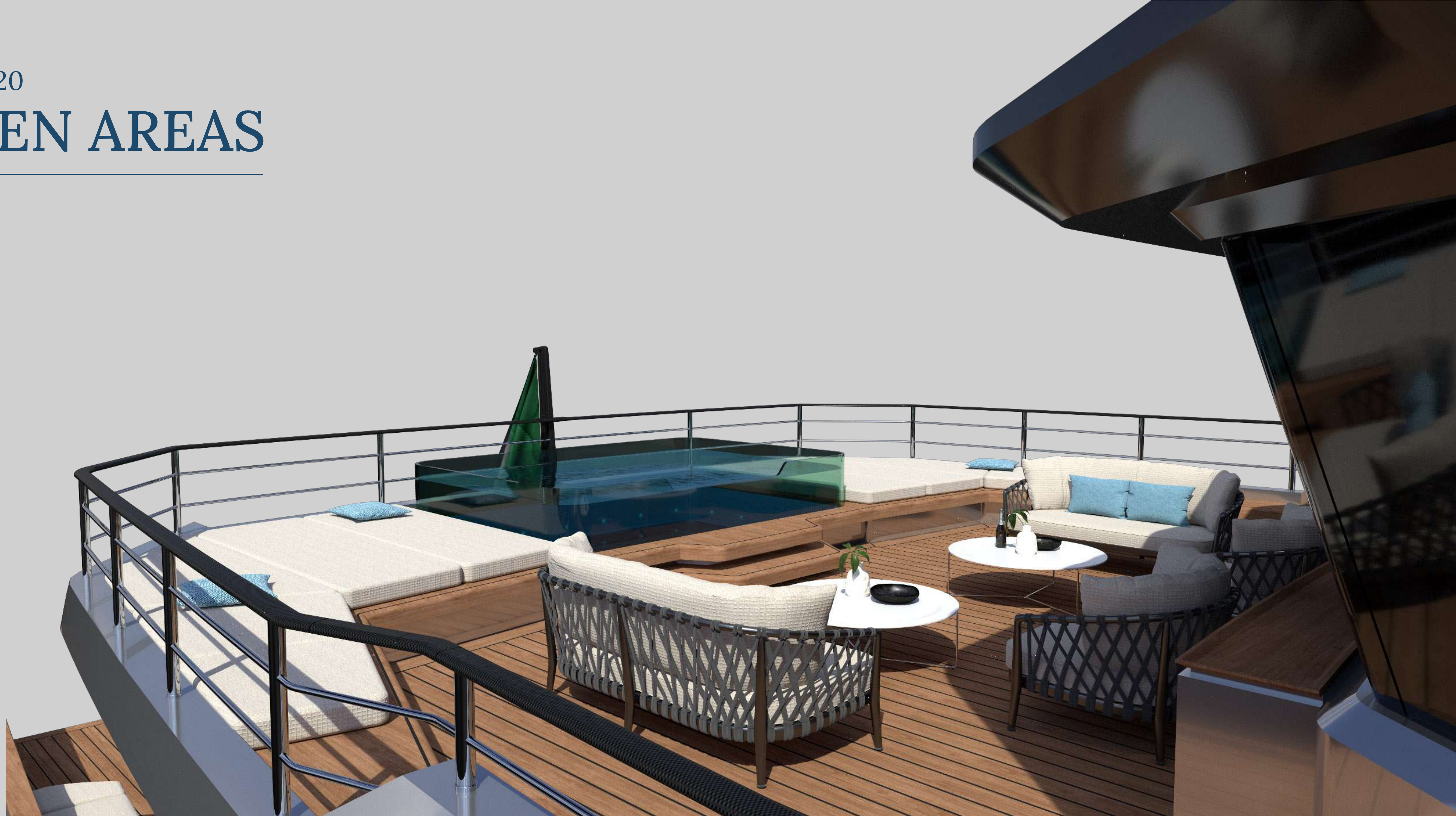


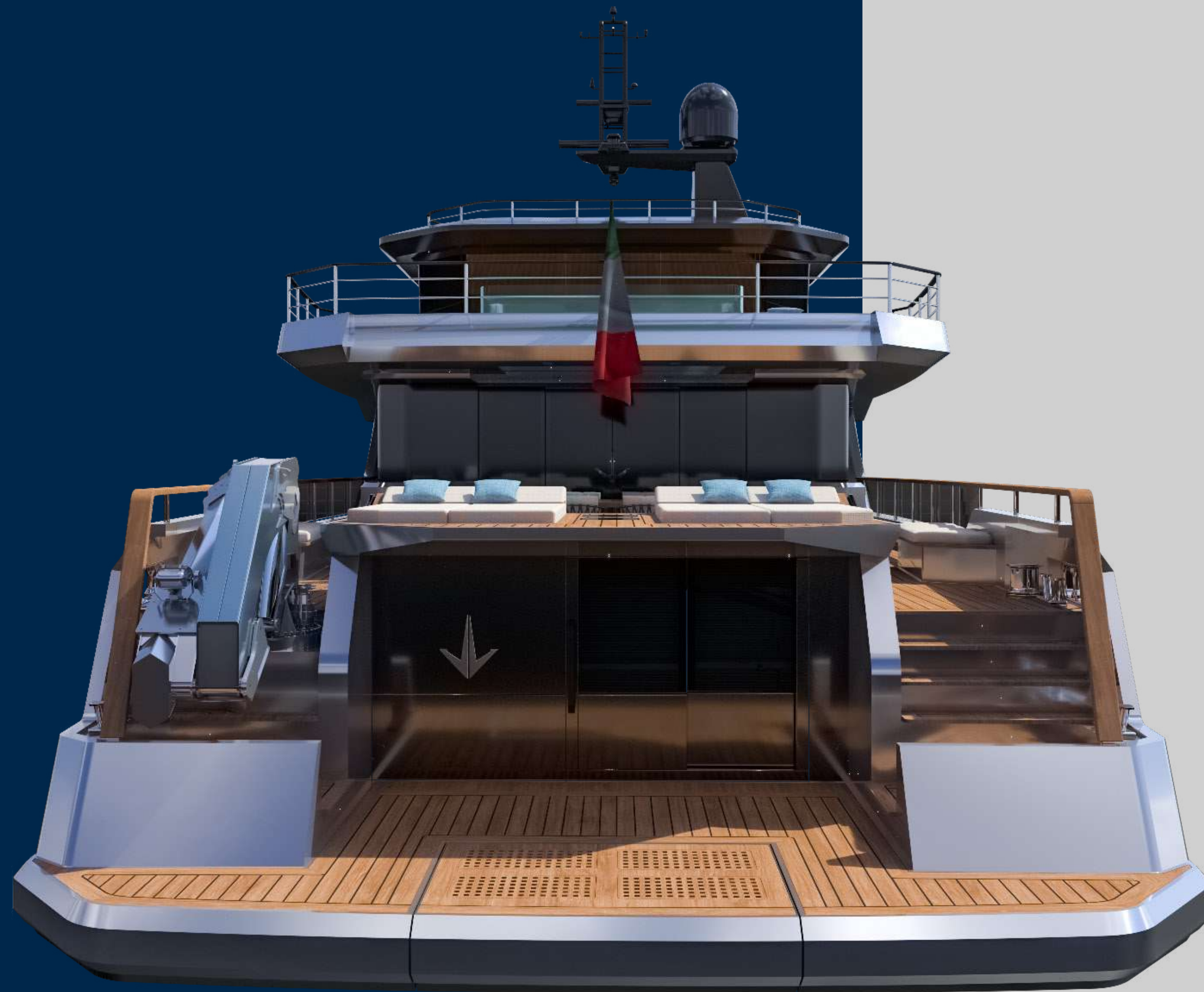
ISS



XPD-120

OPEN AREAS





XPD-120

GARAGE

XPD-120

TENDER



XPD-120 >300 GT

TECHNICAL SPECIFICATION

MATERIALS

Hull: Steel

Superstructure: Steel

DIMENSIONS

Length over all (LOA): 36.30 m

Waterline length (LWL): 33.50 m

Max beam (with manoeuvring wings): 9.84 m

Max beam (excluding manoeuvring wings): 8.38 m

Full load immersion: 2.27 m

Construction height: 4.15 m

GROSS TONNAGE: >300 GT

CAPACITIES

Fuel: 50.000 l

Fresh Water: 10.000 l

Black Water/grids: 1.500 l

Spent lubricating oil: 800 l

Bilge: 2.000 l

SPEED RANGE

Max Speed: 14 kts

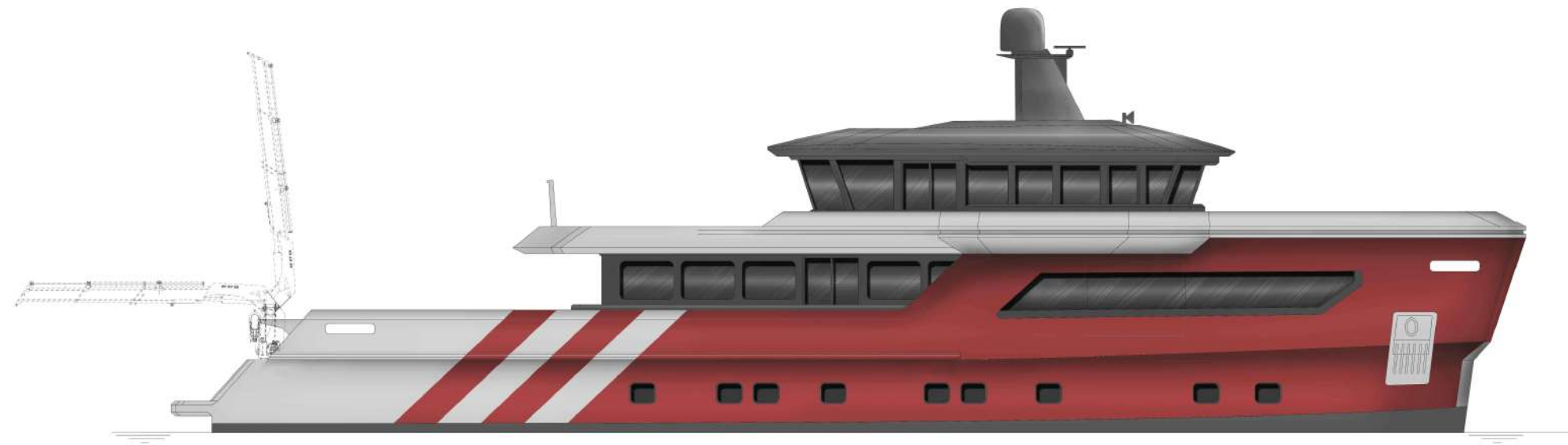
Range @10 kts:..... 4.700 nm

ENGINES:..... 2x CATERPILLAR 420/500 hp @1800rpm

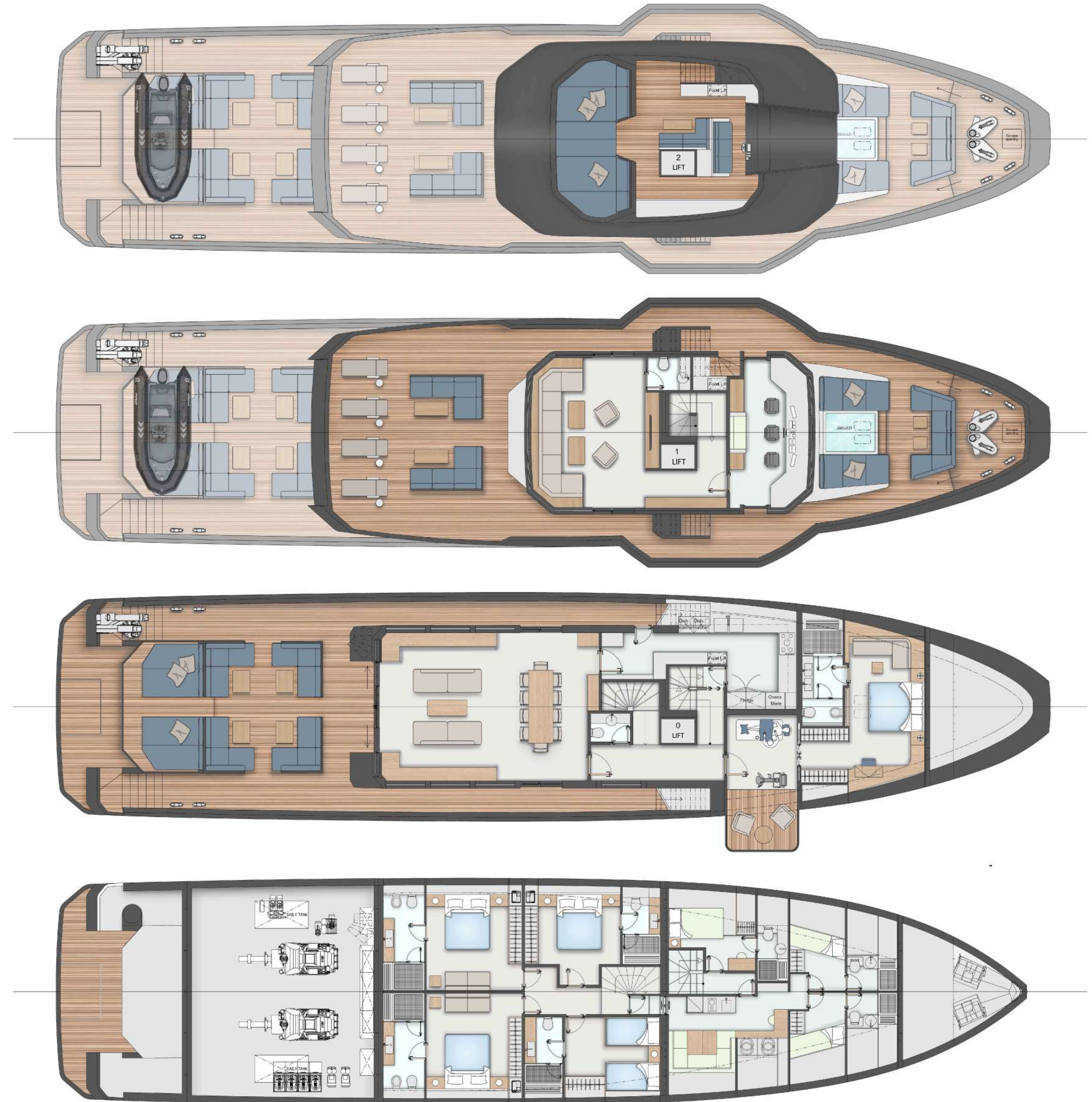
MAIN EQUIPMENT

Passengers: 10p - 5 Cabins

Crew: 4+1p - 3 Cabins

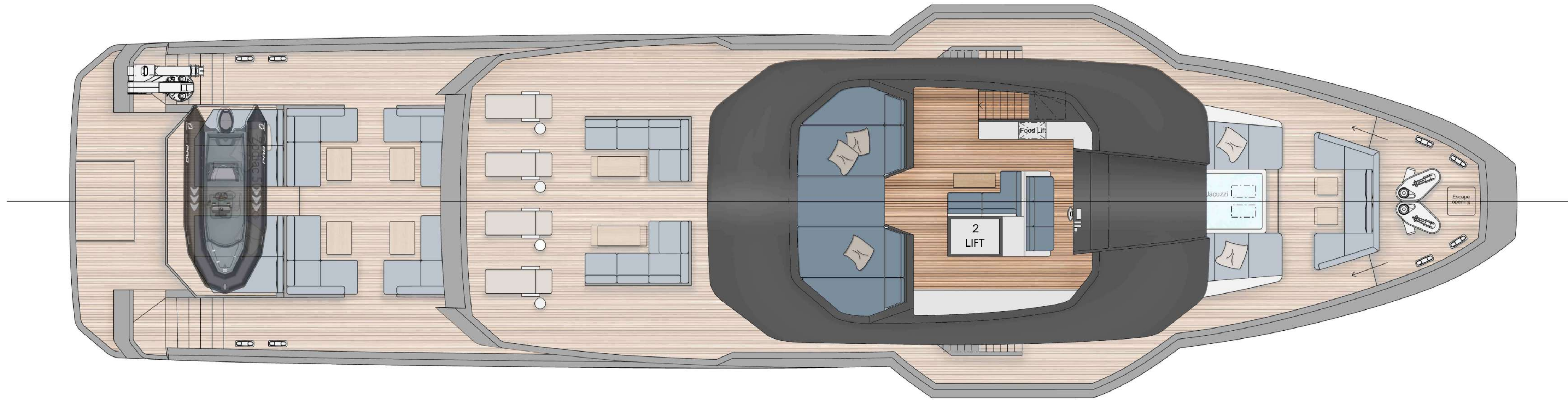


XPD-120 >300GT
**GENERAL
ARRANGEMENT**



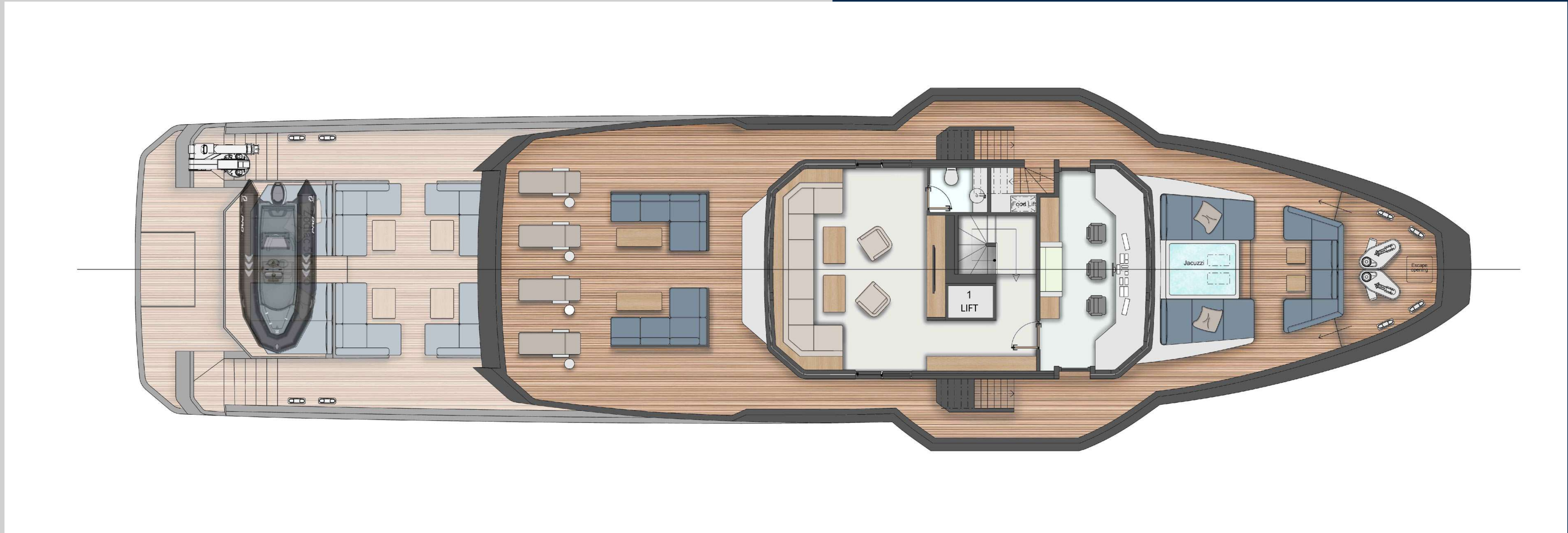
XPD-120 >300GT

SUN DECK | BRIDGE DECK



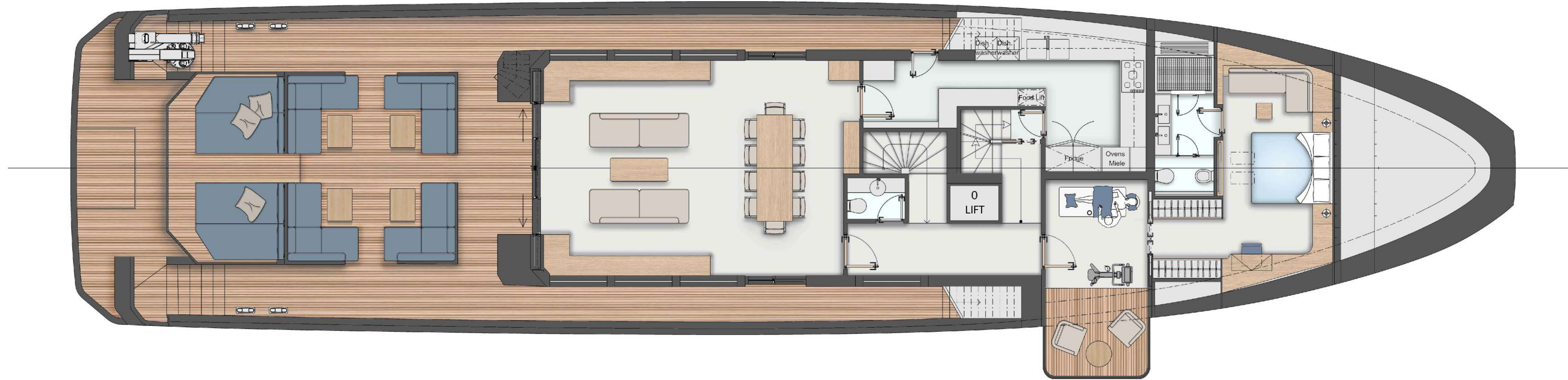
XPD-120 >300GT

UPPER DECK



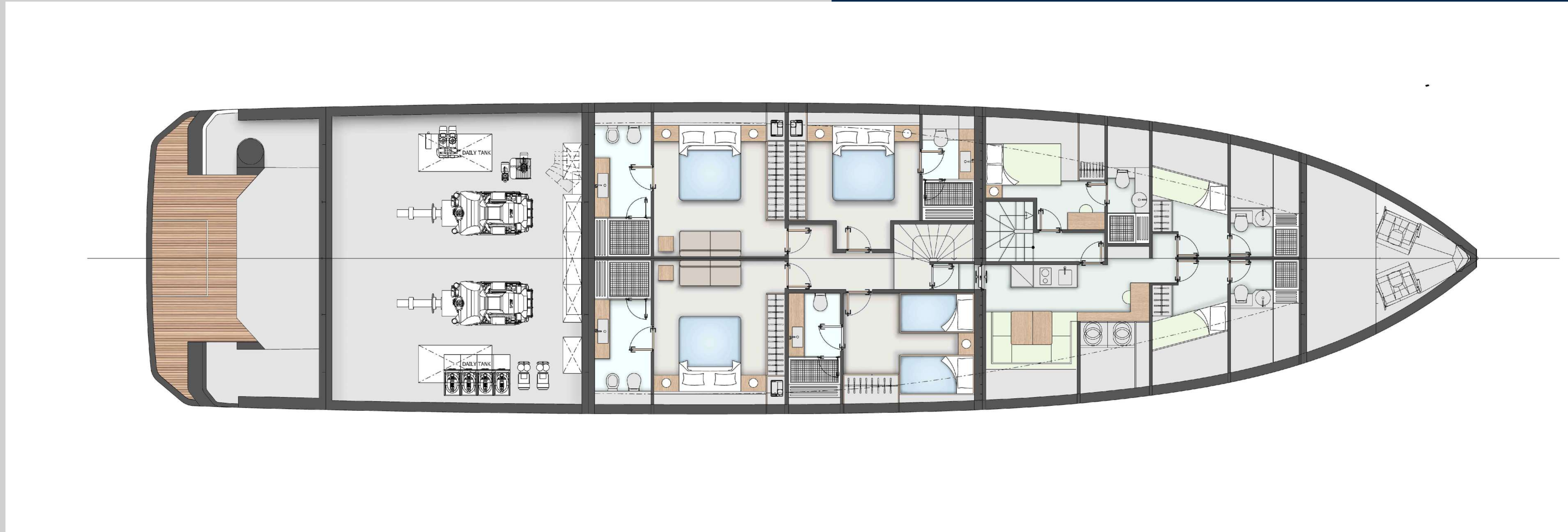
XPD-120 >300GT

MAIN DECK



XPD-120 >300GT

LOWER DECK



XPD-120 <300 GT

TECHNICAL SPECIFICATION

MATERIALS

Hull: Steel

Superstructure: Steel

DIMENSIONS

Length over all (LOA): 36.30 m

Waterline length (LWL): 33.55 m

Max beam (with manoeuvring wings): 9.00 m

Max beam (excluding manoeuvring wings): 7.60 m

Full load immersion: 2.45 m

Construction height: 4.10 m

GROSS TONNAGE: <300 GT

CAPACITIES

Fuel: 50.000 I

Fresh Water: 6.000 I

Black Water/grids: 7.000 I

Spent lubricating oil: 400 I

Bilge: 1.100 I

SPEED RANGE

Cruising speed: 11 kts

Max Speed: 14 kts

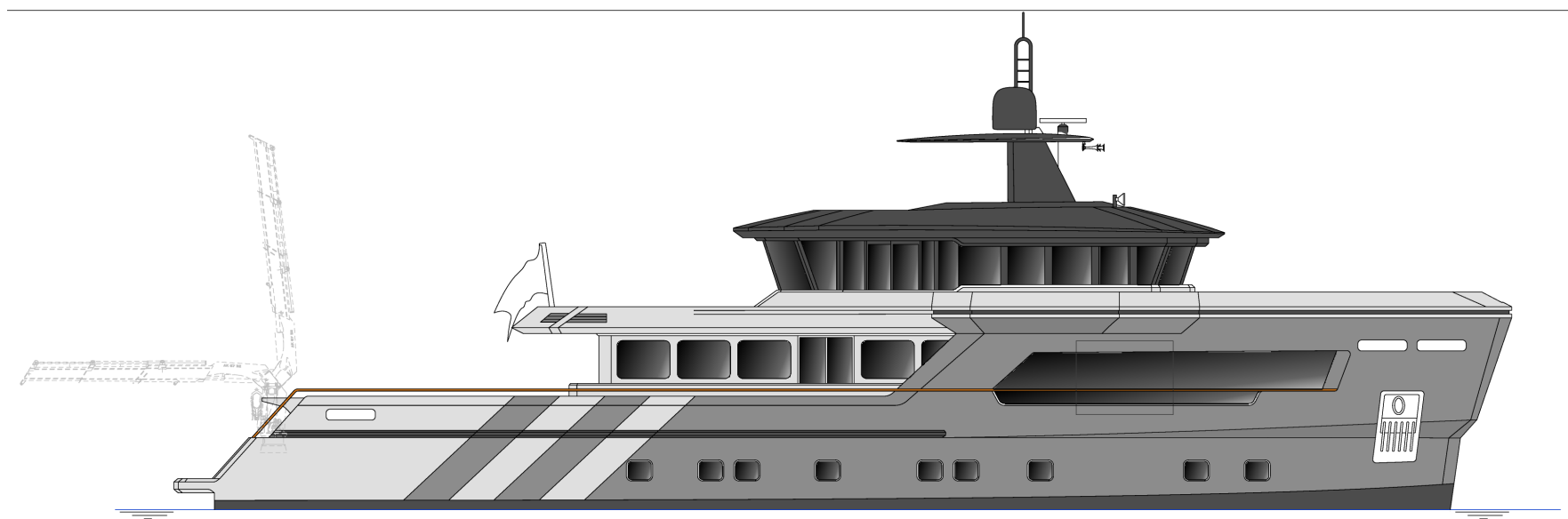
Range @10 kts:..... 4.900 nm

ENGINES:..... 2xMAN D2868 LE 431-500kW @1800rpm

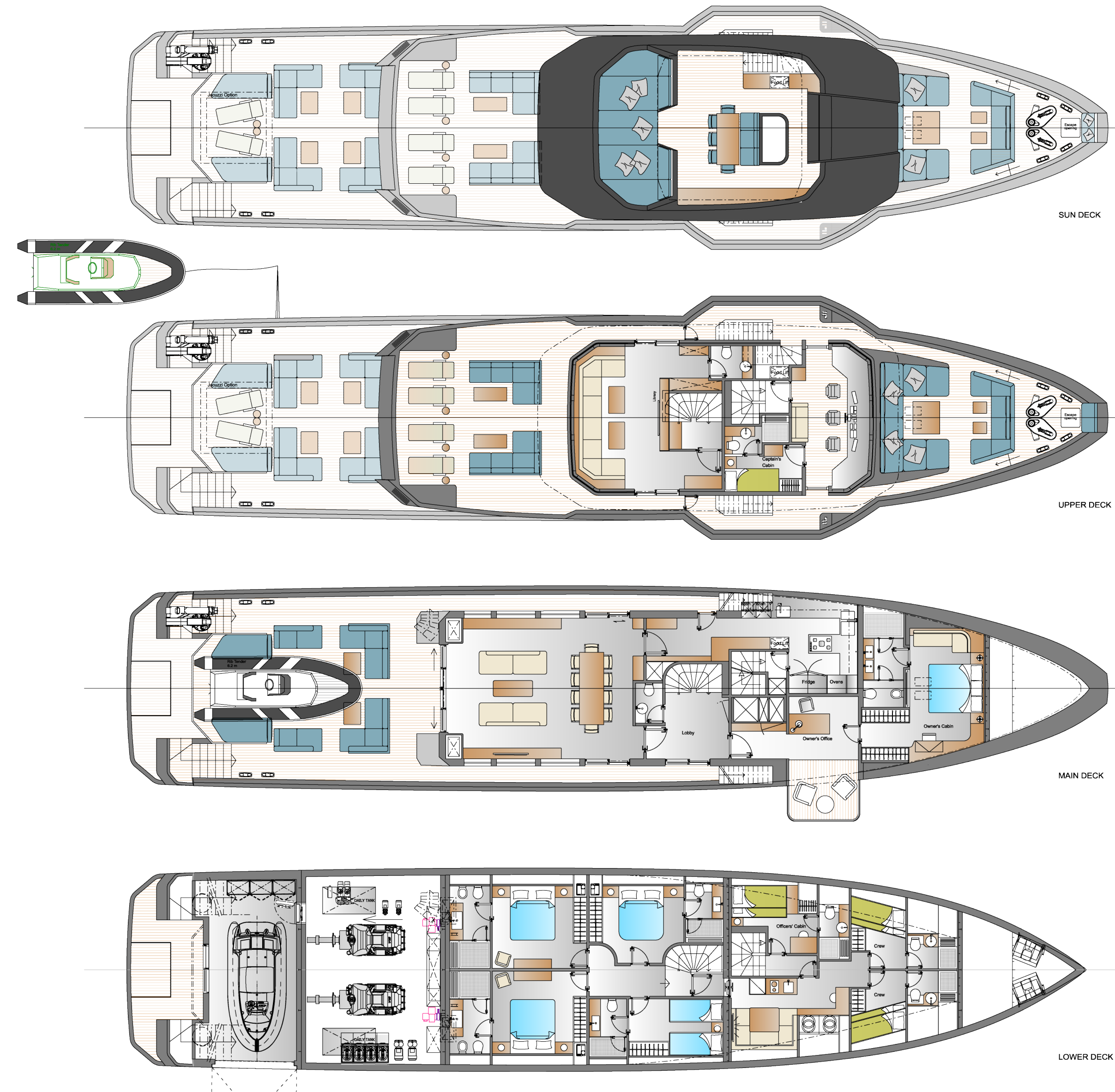
MAIN EQUIPMENT

Passengers: 10p - 5 Cabins

Crew: 6+1p - 4 Cabins

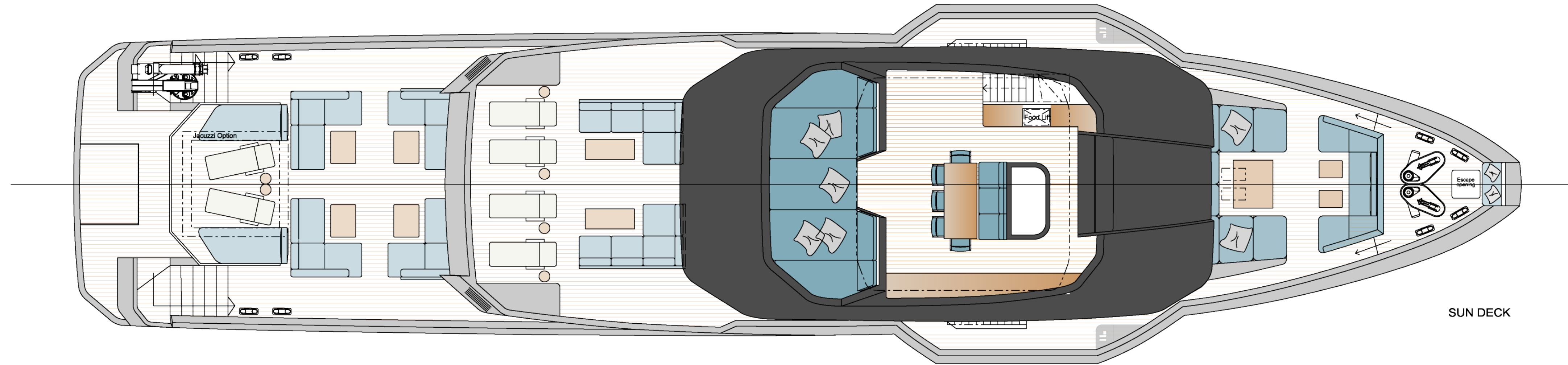


XPD-120 <300GT
**GENERAL
ARRANGEMENT**



XPD-120 <300GT

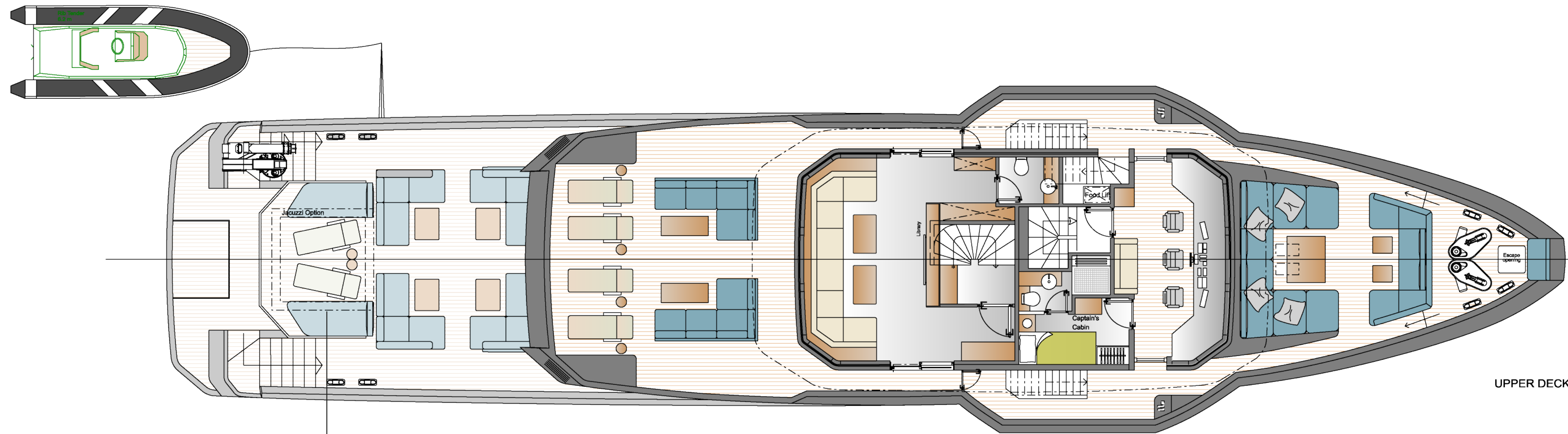
SUN DECK | BRIDGE DECK



SUN DECK

XPD-120 <300GT

UPPER DECK

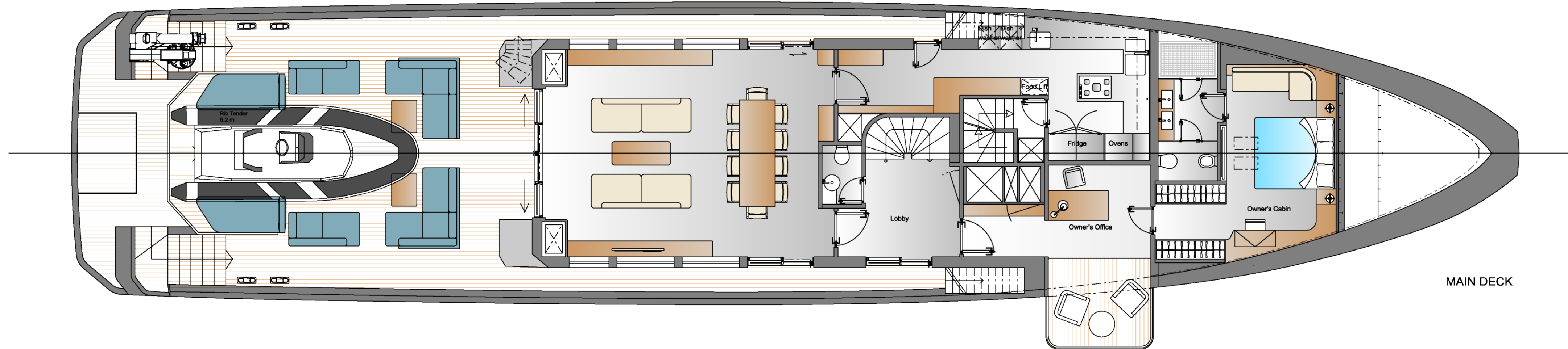


UPPER DECK

OPTIONS: Tender / jacuzzi

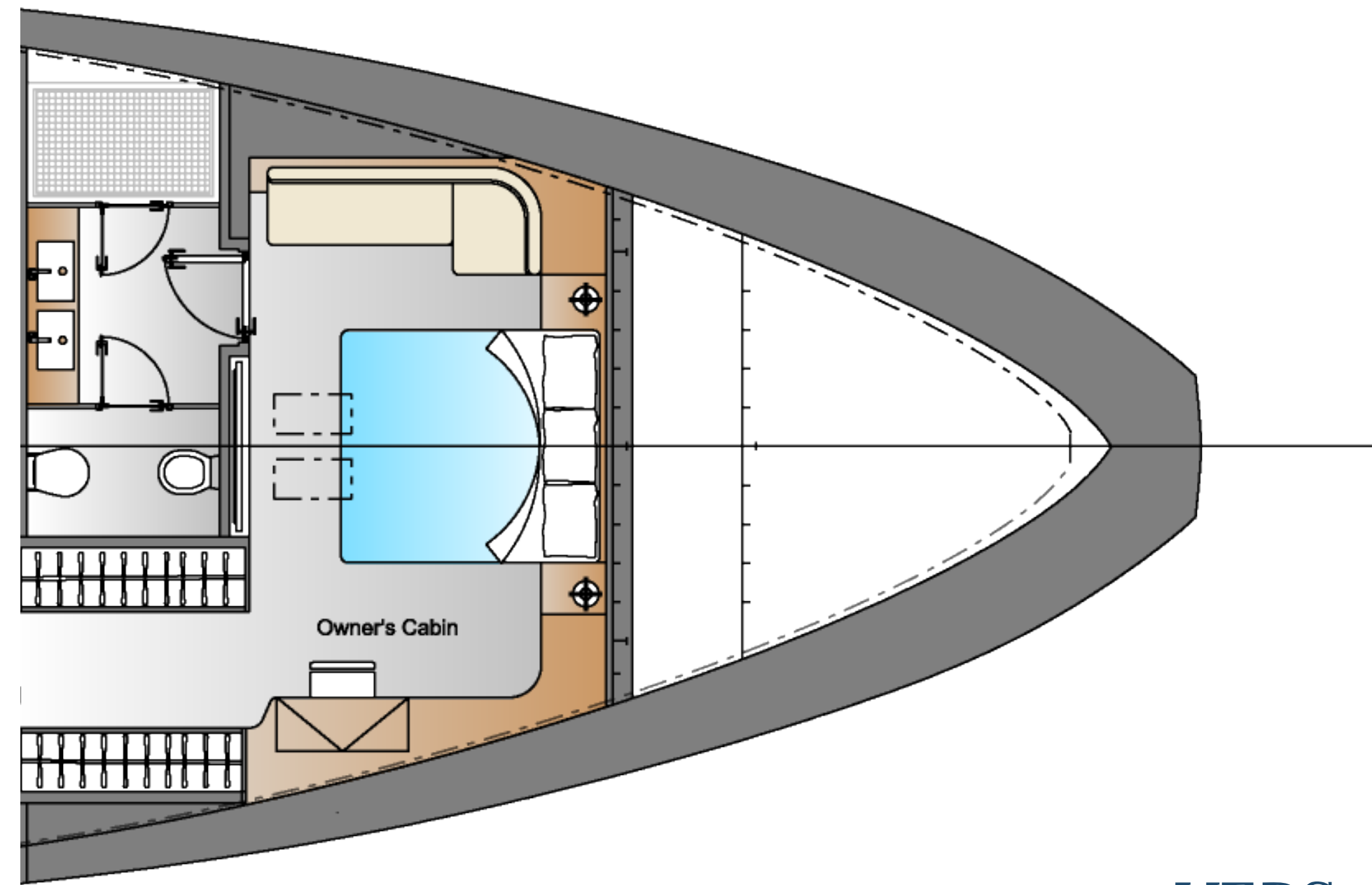
XPD-120 <300GT

MAIN DECK

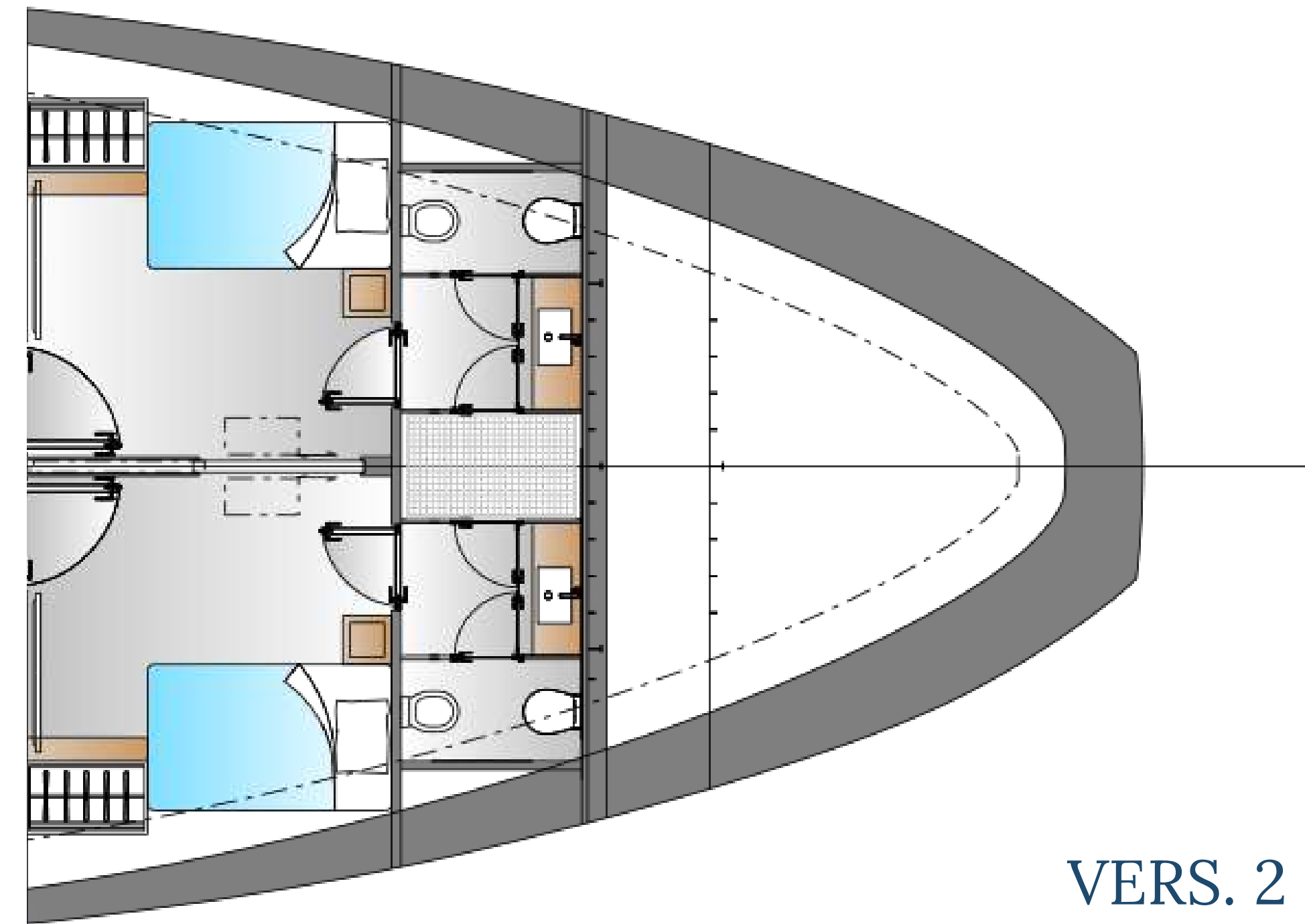


XPD-120 <300GT

MAIN DECK | OPTIONS



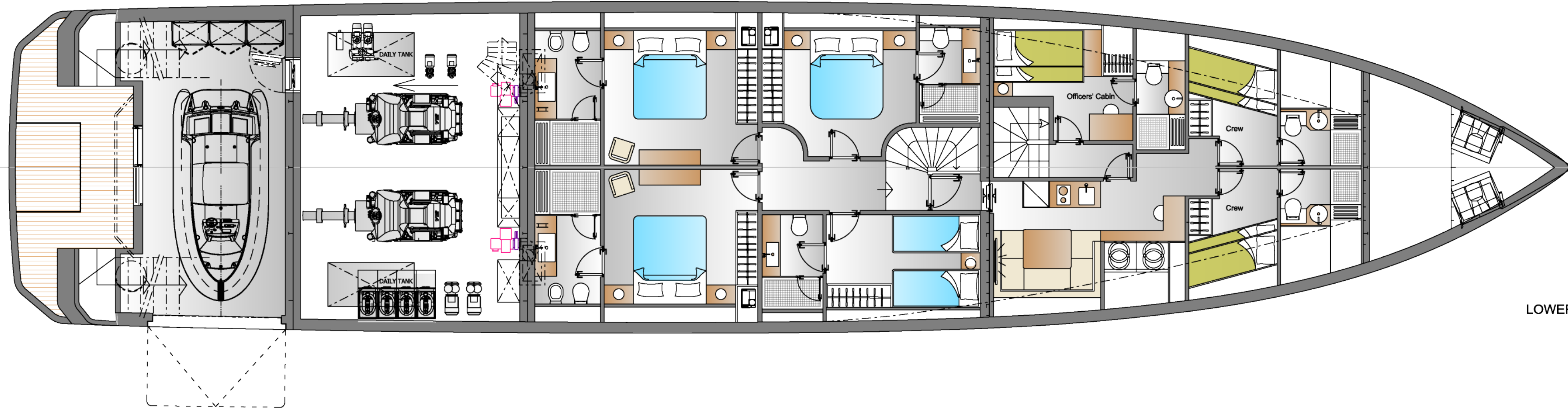
VERS. 1



VERS. 2

XPD-120 <300GT

LOWER DECK



LOWER DECK





XPD-120



XPD-120



XPD-120



ANTONINI
N A V I

ANTONINI NAVI S.R.L.

Sede legale e stabilimento:

Località Pertusola - Frazione Muggiano - 19032 Lerici (LA SPEZIA) - ITALY

Ph +39 0187 1771300

info@antonininavi.com

www.antonininavi.com - www.gruppoantonini.it